

Original Inhabitants

1. Where were the Choctaws living in 1866?

CHOCTAW

Indian Territory

2. Where were the Cherokees living in 1866?

CHEROKEE

Indian Territory

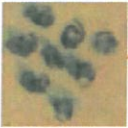
3. In what state or territory were the "New York Indian Lands" in 1866?

Kansas

New York Indian Lands

Resources

4. What Great Lake was surrounded by Copper Mines in 1866?



Lake Superior

5. What river in Montana ran through the richest coal deposits?

Yellowstone



6. If you wanted to claim farmland near Eureka, Kansas, where would the nearest land office be?



Humboldt

7. Buffalo Springs is a town in what state?

Texas

o Buffalo Spr.

Exploration

8. What is the name of the railroad that stretched all the way from St. Louis to Sacramento?

Pacific Railroad

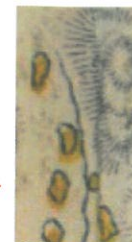
9. According to this map, the only unexplored part of the U.S. lay near the borders of what two states or territories?

Arizona + Utah

UNEXPLORED

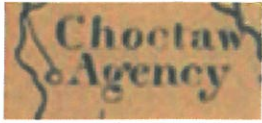
10. Where is the western end of the Arkansas River according to this map?

Colorado



Original Inhabitants

1. In what territory or state were the Choctaws living in 1816?



Mississippi

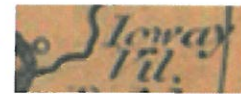
2. In what territory or state were the Cherokees living in 1816?



Georgia

3. Find the Ioway village on this map. What major river is it located on?

Missouri



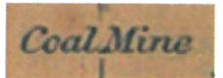
Resources

4. What sort of metal was being mined along the Donegan River in the Northwest territory in 1816?



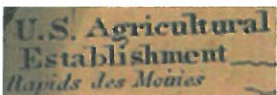
Copper

5. In what territory is the only coal mine noted on this map located?



Illinois

6. Find the U.S. Agricultural Establishment on the Des Moines Rapids. What territory is it in?



Illinois

7. Between what two rivers does this map say there are "Innumerable Herds of Buffalo?"

Arkansas + Kansas



Exploration

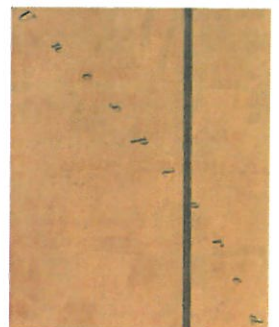
8. This map shows only one road in all of California. What city is it near?



San Jose

9. According to this map, a major tract of land was left unexplored between the Great Salt Lake and what Mountain Range?

Californian



10. What river did Zebulon Pike spend a large part of his expedition traveling along.



Arkansas