

When Maine became a state in 1820, how many counties were there?

- A. 1
- B. 3
- C. 9**
- D. 98

What three Maine counties were created before the United States even existed (before 1776)?

- A. York, Cumberland, and Lincoln counties**
- B. Cumberland, Aroostook, and Waldo counties
- C. Knox, Where's Waldo, and Franklin counties
- D. Oxford, York, and Sagadahoc counties

What three counties were formed *after* the Aroostook War was resolved in 1843?

- A. York, Canada, and Pepto-Bismol counties
- B. Knox, Waldo, and Franklin counties
- C. Androscoggin, Sagadahoc, and Knox counties**
- D. Aroostook, Piscataquis, and Somerset counties

Bangor is the County Seat to what county?

- A. Aroostook County
- B. Cumberland County
- C. Grumpy Moose County
- D. Penobscot County**

What is a 'County Seat'?

- A. The head city of a county, where the county government is located.**
- B. The smallest town of a county.
- C. The last town formed in a county.
- D. The throne-like chair upon which the mayor of Skowhegan sits while watching Jeopardy.

Which city is the County Seat of Aroostook County?

- A. Paris
- B. Houlton**
- C. Kittery
- D. Ho Chi Min City

What Maine county is the biggest in terms of physical size?

- A. Cumberland County
- B. Aroostook County**
- C. Doowin-Timen County
- D. York County

What county is the *second* biggest in terms of physical size, but the smallest in terms of population?

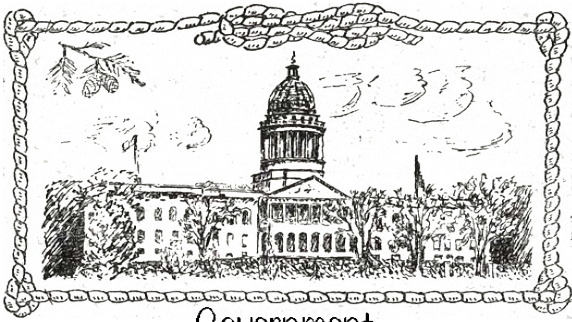
- A. Piscataquis County**
- B. Aroostook County
- C. Cumberland County
- D. Orange County

How many counties are there in Maine today?

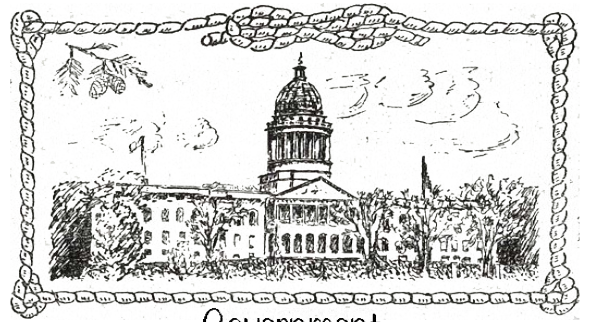
- A. 14 (13 during Leap Years)
- B. 20
- C. 16**
- D. 9

Portland is the County Seat to what county?

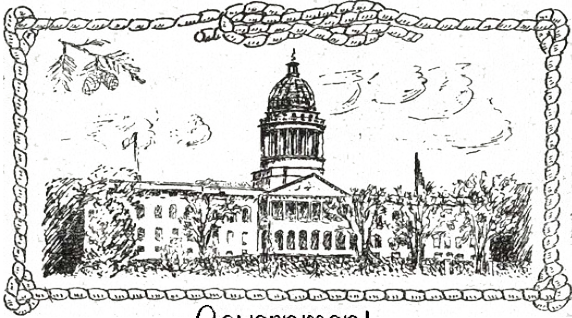
- A. Aroostook County
- B. Cumberland County**
- C. Mordor County
- D. Penobscot County



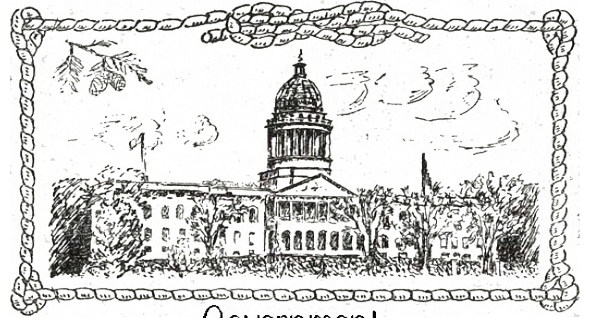
Government



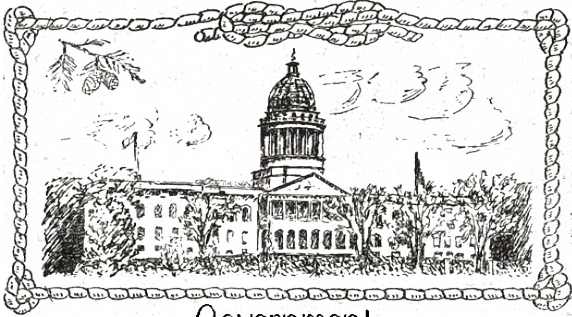
Government



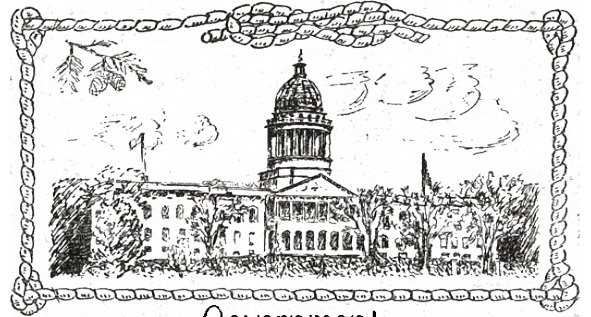
Government



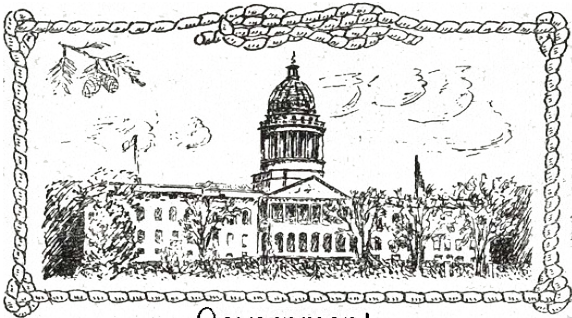
Government



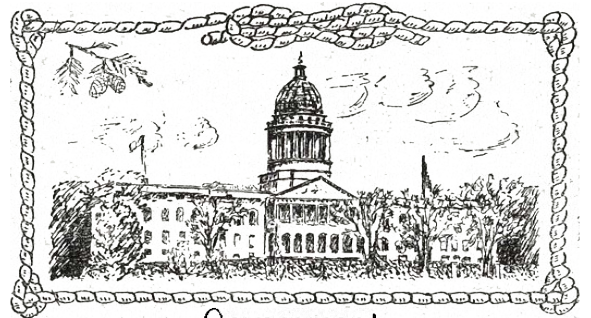
Government



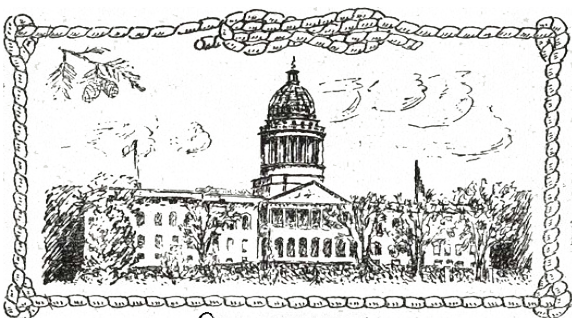
Government



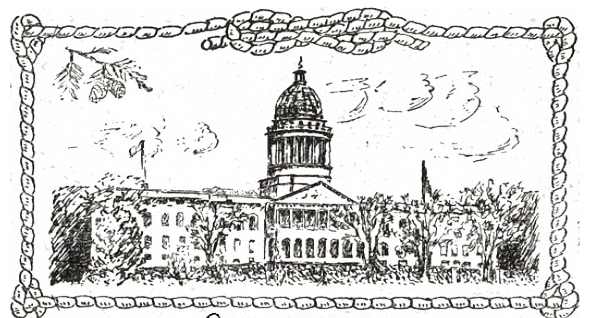
Government



Government



Government



Government

In the early 1800s, a man learned that the Native American name for a particular place in Maine was 'Red Hill.' What valuable metal was found there?

- A. Platinum
- B. Gold
- C. Iron**
- D. Death Metal

What crop are northern Maine farmers known for?

- A. Potatoes**
- B. Tobacco
- C. Bananas
- D. Culottes

What is the animal shown on Maine's State Seal?

- A. Lobster
- B. Narwhal
- C. Moose**
- D. Naked Mole-Rat

Which tree did colonial Europeans love to use as ship masts?

- A. Cherry Tree
- B. Wotchow-Forlatt Tree
- C. Birch Tree
- D. White Pine Tree**

What is Maine's state tree?

- A. The Eastern White Pine**
- B. The Mulberry Bush
- C. The Red Oak
- D. The Giving Tree

What is the longest river that is entirely in Maine?

- A. Moose River
- B. Kennebec River**
- C. St. Charles River
- D. Denial River

What is the highest mountain in Maine?

- A. Mt. Saint Helens
- B. Mt. Katahdin**
- C. Big Rock Candy Mountain
- D. Bradbury Mountain

Maine had a lot of tanneries during the 1800s and early 1900s. What ingredient for making leather does Maine have in abundance?

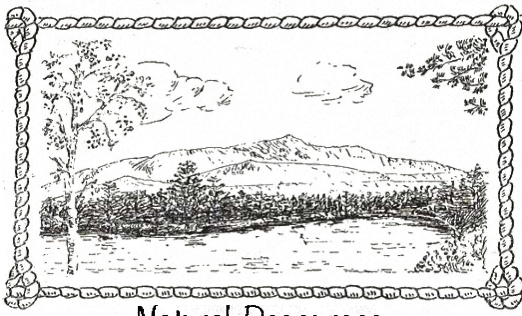
- A. Oak, Fir, and Hemlock bark**
- B. Lobster Shells
- C. Sugar Cane
- D. Pixie Dust

What is the largest lake in Maine?

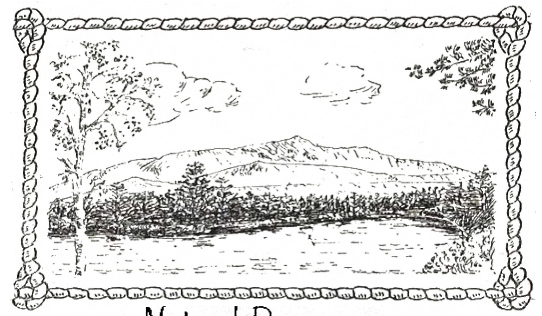
- A. East Grand (Schoodic) Lake
- B. Sebago Lake
- C. Moosehead Lake.**
- D. Red #40 Lake

Which kind of animal was an important resource for early Mainers?

- A. Wild Cats
- B. Fish**
- C. Buffalo
- D. Llamas



Natural Resources



Natural Resources



Natural Resources



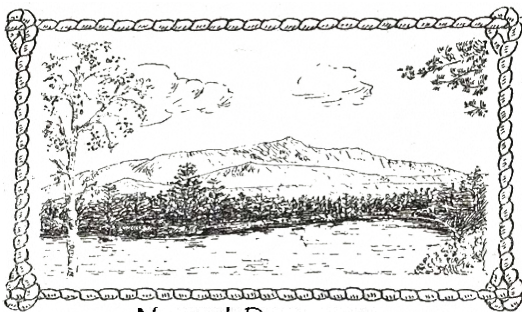
Natural Resources



Natural Resources



Natural Resources



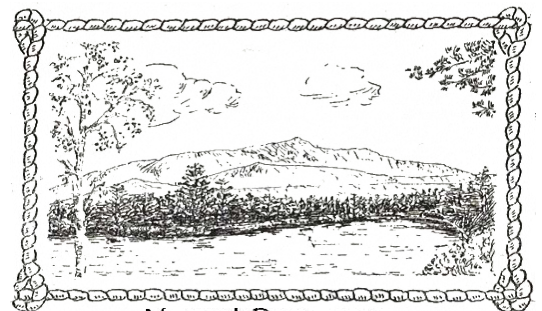
Natural Resources



Natural Resources



Natural Resources



Natural Resources

During the Colonial Era, which two European countries were particularly interested in territory in present-day Maine?

- A. The Portuguese and the Lizard People
- B. The British and the Spanish
- C. The French and the British**
- D. The Dutch and the French

Why did wealthy people from New York and Boston want to come to Maine during the summers in the 1800s and 1900s?

- A. To avoid the heat and disease in cities**
- B. To grow coffee and cocoa beans
- C. To celebrate Independence Day
- D. To visit Funtown

What part of Maine did European Colonists settle first?

- A. The "High Lands"
- B. The Portland Sewers
- C. The Coastal Areas**
- D. The Longfellow Mountains

What does "Dirigo," Maine's state motto, mean?

- A. "To Kill"
- B. "To Stumble"
- C. "To Sail"
- D. "To Lead"**

Who was the European ruler who proposed a compromise for the U.S. and Canada (Great Britain) during the border dispute of the 1830s & 40s?

- A. King of the Netherlands**
- B. King of the Jungle
- C. Holy Roman Emperor
- D. King of France

What was Portland called in the 1700s?

- A. Rumsey
- B. Falmouth**
- C. Biddeford
- D. Ho Chi Min City

What major railroad brought tourists to Maine in the 1800s and early 1900s?

- A. The Polar Express
- B. Baxter Railroad
- C. Boston and Maine Railroad**
- D. Reading Railroad

What was the name of the "war" that almost happened in Maine in 1842 and 1843?

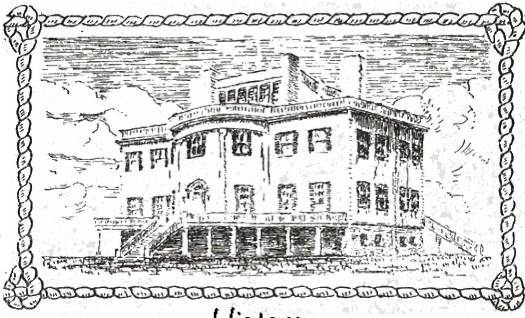
- A. Aroostook War**
- B. Allagash War
- C. World War I
- D. Woodisset-Gudfore War

What major event happened in Maine in 1820?

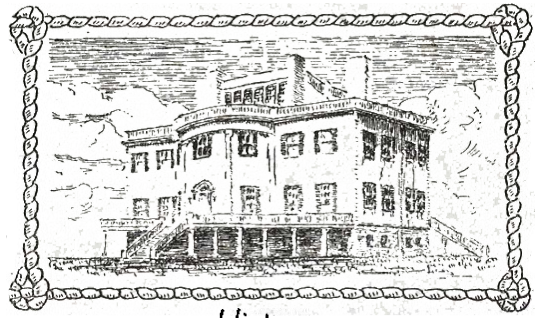
- A. The French won the Aroostook War.
- B. The Bigfoots attacked.
- C. Maine became a state.**
- D. Thomas Jefferson was elected governor.

What was Maine before it was a state?

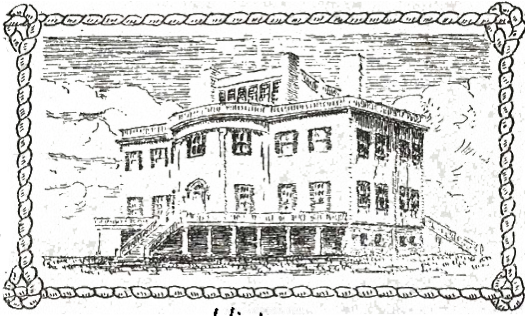
- A. Territory
- B. District**
- C. Empire
- D. Volcano



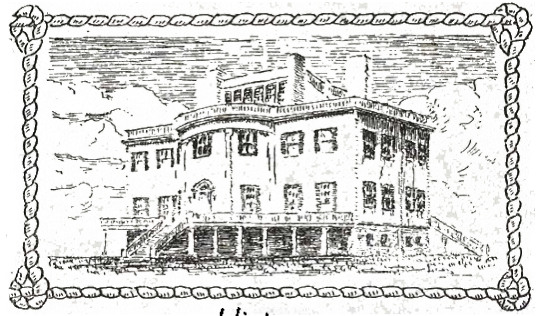
History



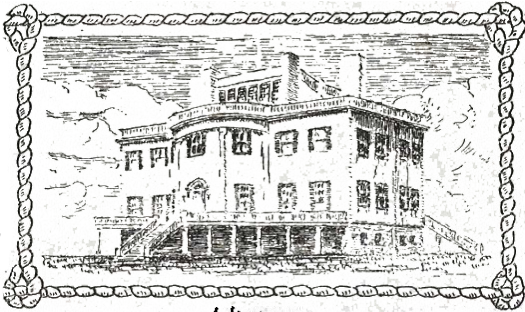
History



History



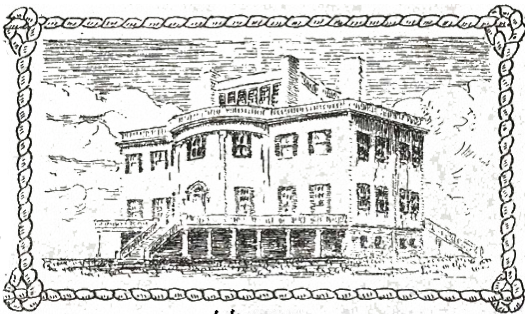
History



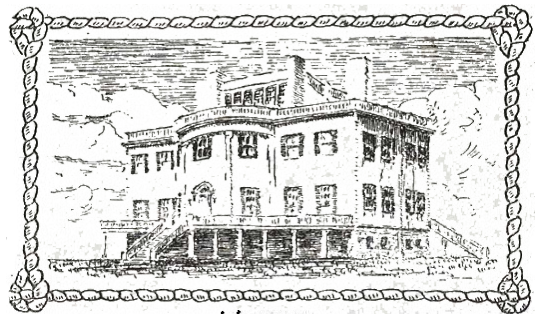
History



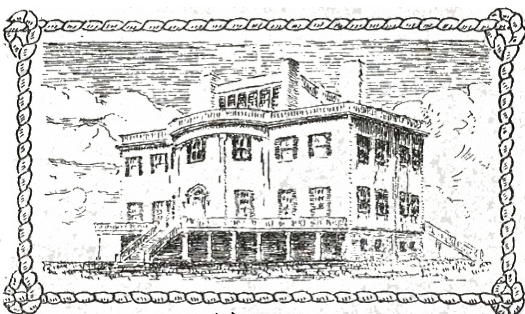
History



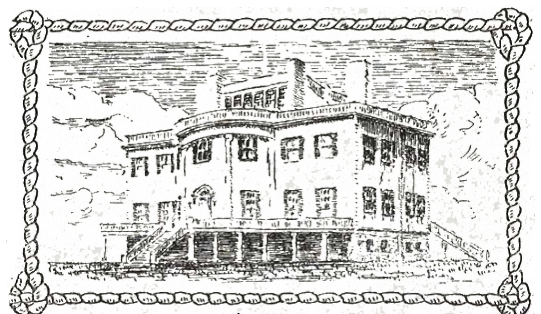
History



History



History



History