

Peaks Island History Activity

USING 1950s SANBORN FIRE INSURANCE MAPS



from the collections of

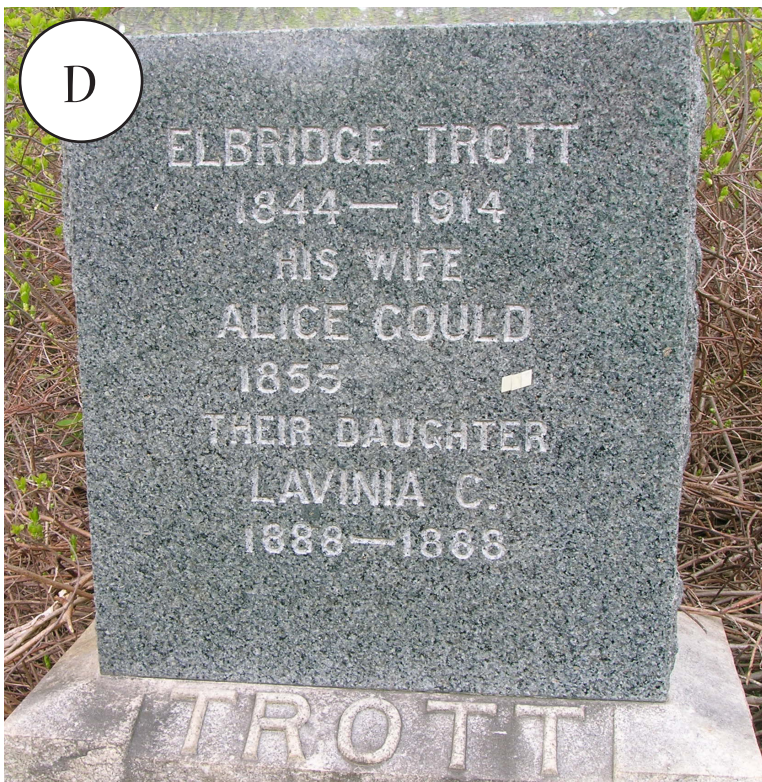
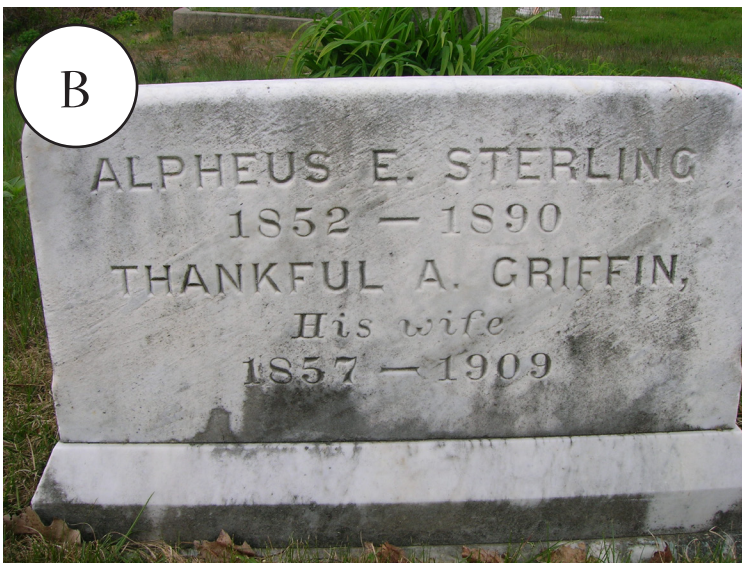
Osher Map Library
& *Smith Center for Cartographic Education*

THE OLDEST FAMILIES ON PEAKS ISLAND

Some of earliest families to settle Peaks Island include the Bracketts, Sterlings, Skillings, Trotts, and Torringtons. In the Brackett Memorial Cemetery find the following headstones:

1. Alpheus E. Sterling
2. Evelyn F. Skillings
3. Elbridge Trott
4. Sarah M. Torrington

Mark where you find these on the map of Brackett Memorial Cemetery (page 8).





Maine was a very active participant in the Civil War, sending thousands of men to fight for the Union. After the War, Peaks became the location for retreats for two Maine Regiments, the Fifth and the Eighth. Like most places, Peaks Island lost a few of its own in the War, such as John Latham, who was only 18 when he died. Mark where you find these sites on the map.

LIFE ON PEAKS



In Peaks Island's early days, many of its residents were mariners, such as Captain George J. Thompson. Mark where you find this on the map of Brackett Cemetery.

During the late 1800s and early 1900s, Peaks became a vacation spot. There were several summer theatres, one of which was located at the site pictured in the center image above. There was even an amusement park with a roller coaster located at the site pictured above to the right.



Just like Portland, Peaks Island has burned down multiple times. Find this fire alarm and mark it on the map.

During WWII, thousands of troops were stationed on the Island, making its population boom. The bench pictured above is dedicated to woman who was born during the first year of World War. Over the decade, the number of births on Peaks Island would spike dramatically. Of course, with so many people living on the Island, they needed more than one market, unlike today. Mark where you find these sites on the map.

PEAKS ISLAND AS A TOURIST SPOT TODAY

4

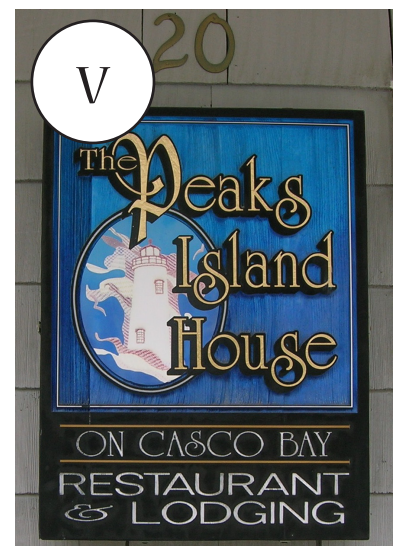
Peaks Island is a fun place to explore. In addition to the abandoned WWII bunkers on the back part of the Island, you can find fire pits and rope swings off the beaten paths. Mark where you find these on the map.

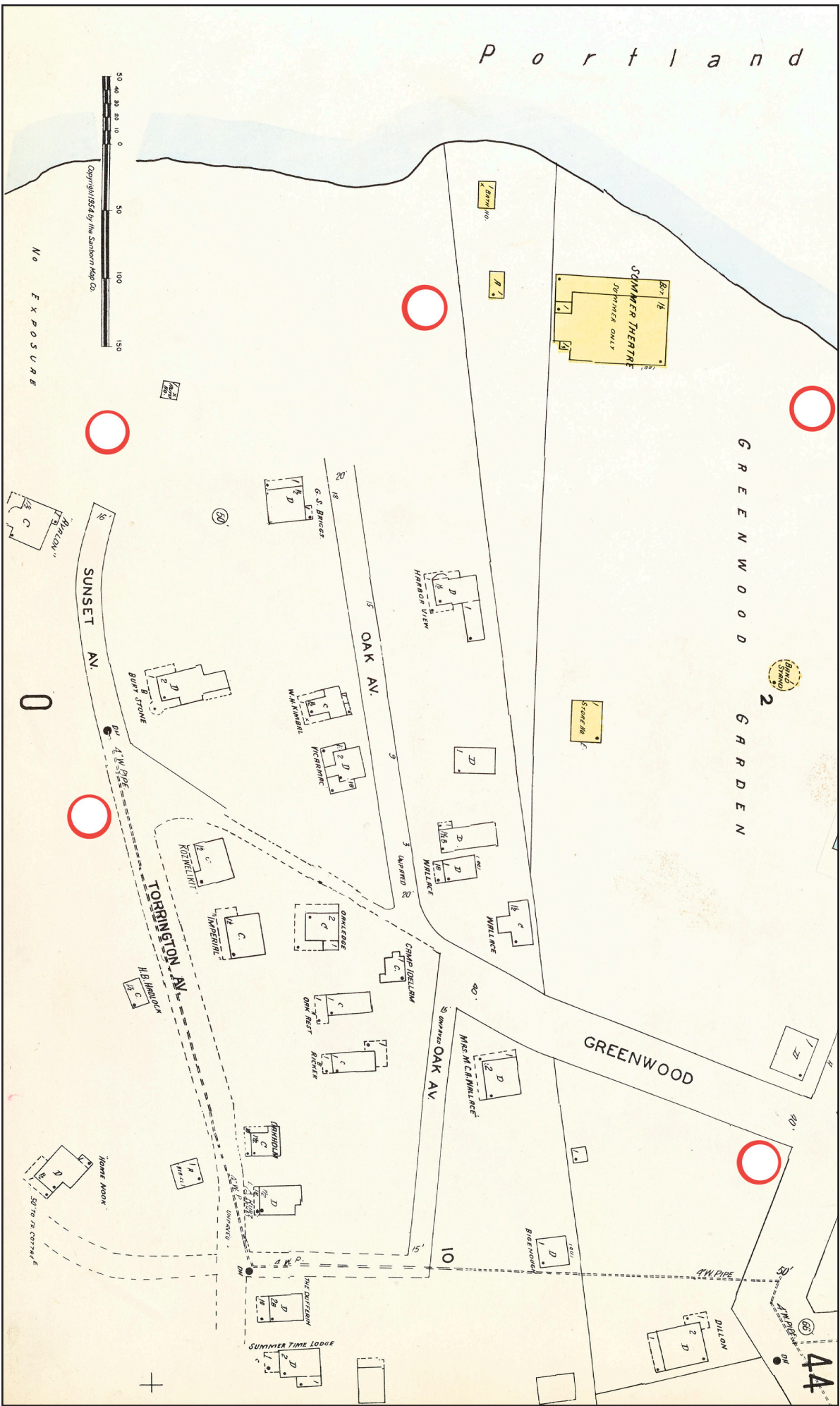


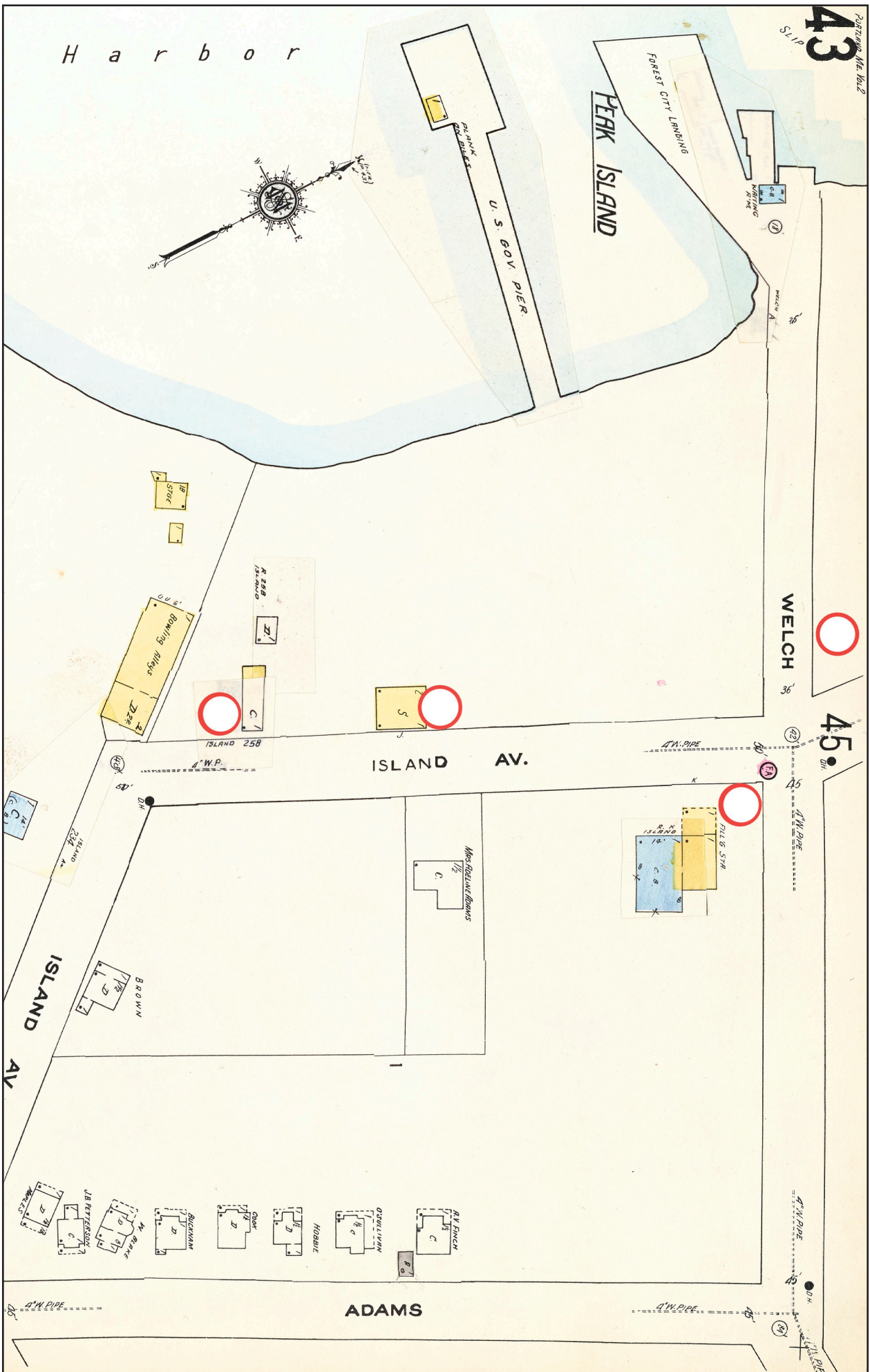
There are dozens of scenic lookout spots, including benches that face Ram Island Ledge Light and Cushing Island. Mark where you find these on the map.



Peaks Island boasts several businesses that cater to tourists and locals. These include Gem Gallery, named after an old summer theatre; Downfront, the Ice Cream shop; the Inn on Peaks; and Peak's Island House, a local restaurant. Mark where you find these on the map.







BRACKETT MEMORIAL CEMETERY

Use this map to mark where you found each of the gravestones in this activity.

